

USER MANUAL **SOCKETS**



HANDELMAATSCHAPPIJ VLIERODAM B.V.
NIJVERHEIDSWEG 21

POSTBUS 827

3160 AA RHOON

010 - 5018000

010 – 5013843

www.vlierodam.nl



HANDELMAATSCHAPPIJ VLIERODAM B.V.

Nijverheidsweg 21 , 3160 AA Rhooon

010-5018000

www.vlierodam.nl

User manual sockets:

Sockets are used to attach steel wire rope to a fixed point to which the socket is to be connected. This can be as an anchoring system for tubes or pipes, anchor wires of dredging material, anchor cables of oil platforms, towing cables or for fastening cables in construction purposes such as bridges, roof construction etc.

Sockets are the strongest steel wire rope end fitting and if they are assembled in the proper way they can meet at least the breaking strength of the steel wire rope. In the past melted zinc was poured into the socket to attach the steel wire rope; nowadays suitable resins have been developed for this purpose.

Sockets needs to be visually inspected every year and tested every 4 years by an expert body.

Before using a socket you must inspect the socket, the wedge (by an open wedge socket) and the pin (by all open types) on any damages or wear.

Always be sure that the socket and the wedge (by an open wedge socket) have the correct size for the wire rope diameter.

It must be avoided that the molding material comes into contact with strong alkaline solutions. It is a known fact that hydrolysis based on such solutions will degrade polyester very quickly. The cured molded material also has a low resistance level against aliphatic ketones such as acetone and methyl ethyl. Furthermore it is recommended to not continuously expose the resistance casted in sockets to temperatures higher than 115 degrees Celsius.

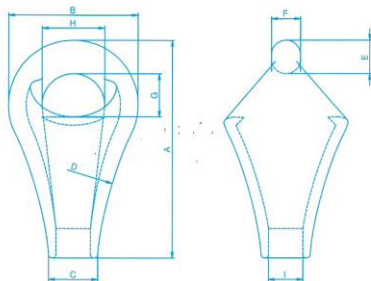
Never shock load a socket.

There is a wide range of sockets, i.e.:

Pear sockets

A pear socket is only to be used in grabbing activities.

The wire rope is poured into the socket.

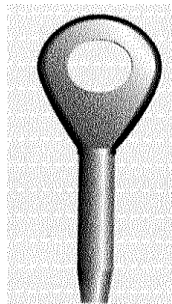
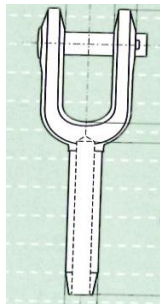


Open and closed swaged sockets

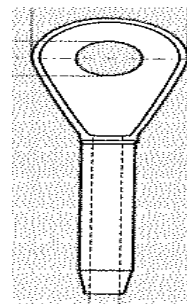
The swaged socket is to be pressed around the wire rope.



Open type



Closed type





HANDELMAATSCHAPPIJ VLIERODAM B.V.

Nijverheidsweg 21 , 3160 AA Rhoon

010-5018000

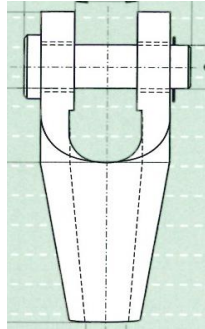
www.vlierodam.nl

Open and closed spelter sockets

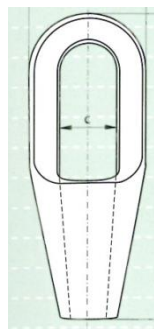
The wire rope is to be poured into the socket.



Open type

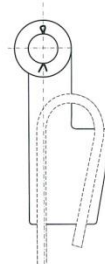
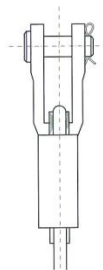


Closed type



Open wedge sockets

The wedge and body act as a vice which grips the wire rope and locks it in place. The socket may be used within the range of wire rope diameters.



By an open wedge socket you must be sure that:

- the loaded part of the steel wire rope should be mounted in the center line of the pin,
- use only with standard 6-8 strand wire rope,
- when installing the wire rope, always pre-load the wedge with the wire rope in place,
- never weld the tail on standard wire rope; the tail should have a length of at least 6 times the wire rope diameter with a minimum of 150 mm, secure the dead end of the rope with a wire rope clip as shown in figure below,
- before applying the first load always use a hammer to seat the wedge and rope as deep as possible into the socket,
- check the assembly regularly to re-tighten or re-position if necessary,
- never side load the wedge socket as it has not been designed for that purpose,
- load may slip if the connection is not properly installed,
- the efficiency of a wire rope – wedge socket connection is 80% of the minimum breaking load of the wire but limited to the minimum breaking load of the socket,
- only use the original wedge supplied by the manufacturer of the socket and be sure it is suitable for the diameter of the rope used,
- never use a wedge from any other supplier than the original socket supplier as the dimensions will not match.



HANDELMAATSCHAPPIJ VLIERODAM B.V.

Nijverheidsweg 21 , 3160 AA Rhoon

010-5018000

www.vlierodam.nl

